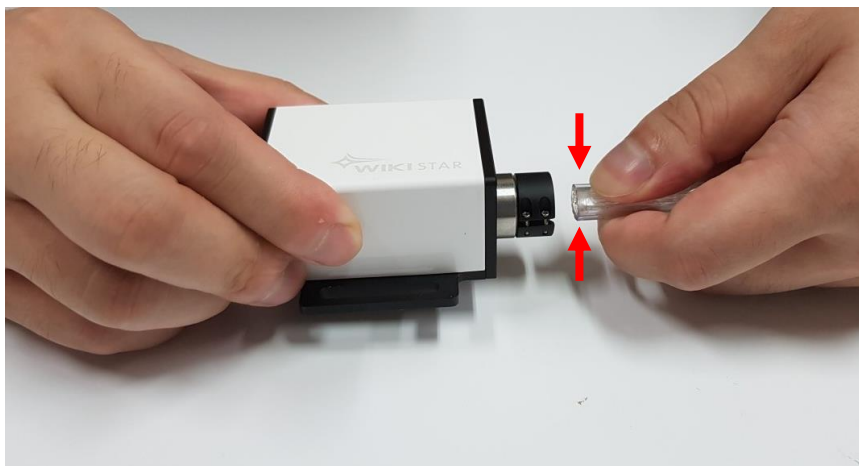
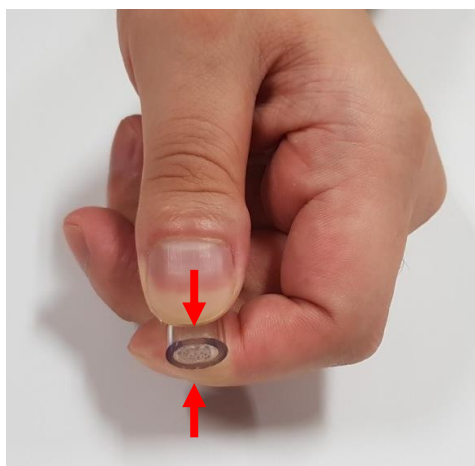


- Mercury-RGB-B10 is for 10mm diameter multi-core side glow fiber.



10mm multi-core POF and Mercury-RGB-B10

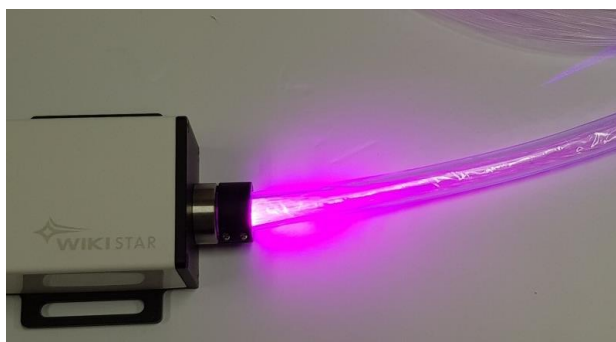
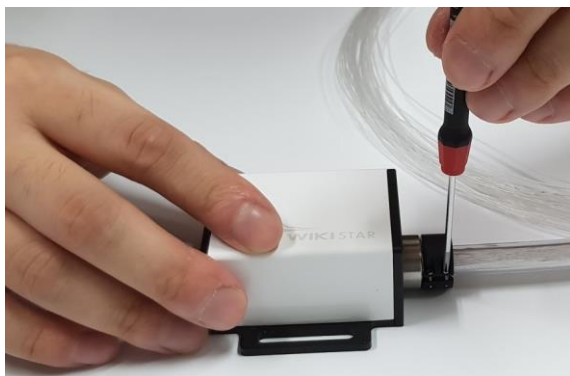
- How to assemble POF into Mercury-RGB-B10
 - Press POF up and down to assemble POF into the Bundle adaptor.
 - Place POF horizontally to insert into the Bundle adaptor.



3. Push POF to the end into the Bundle adaptor.



4. Lock the M1.6 screw of the bundle adaptor by turning it with a cross screwdriver so that POF does not come off.



Example of incorrect assembly(POF inserted into only middle)