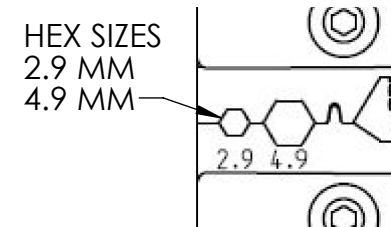
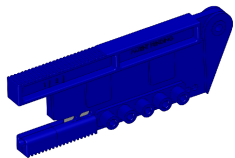
**Operation**

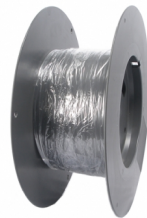
- Place the rear portion of the ST connector with cable into the 2.9mm hex for crimping
- Note: Make sure you have at least 2mm of fiber sticking out of the end of the connector
- Completely close the handles, thus crimping the connector/ cable assembly
- Remove the cable and insert it into the swage collet
- Note: the counter bore in the collet to limit the stop depth
- Completely close the handles again and swage the end of the connector
- Open the handle and your connector is complete

DETAIL A
CRIMP AREA**RELATED ITEMS:**

FF-ST-RZR-1



FF-ST-1000



FF-GHCP-4001

CONFIDENTIAL INFORMATION:

THIS INFORMATION IS OWNED BY FIBERFIN INC. AND CONTAINS MATERIALS CONCERNING FIBERFIN INC. INTELLECTUAL PROPERTY RIGHTS, BUSINESS PLANS, CUSTOMERS, AND PRODUCTS (CONFIDENTIAL INFORMATION) THAT ARE CONFIDENTIAL AND OF SUBSTANTIAL VALUE TO FIBERFIN INC. YOU ARE HEREBY NOTIFIED THAT ANY DISSEMINATION, DISTRIBUTION, OR COPYING OF THIS CONFIDENTIAL INFORMATION WITHOUT PRIOR WRITTEN PERMISSION FROM FIBERFIN INC. IS STRICTLY PROHIBITED. IN RECEIVING THIS INFORMATION YOU AGREE THAT YOU SHALL NOT DISCLOSE ANY SUCH CONFIDENTIAL INFORMATION TO ANY THIRD PARTY AND SHALL TAKE EVERY REASONABLE PRECAUTION TO PROTECT SUCH CONFIDENTIAL INFORMATION FROM SUCH DISCLOSURE. IN THE EVENT YOU ARE ASKED TO RETURN THE CONFIDENTIAL INFORMATION TO FIBERFIN INC. THERE SHALL BE NO USE OR DISCLOSURE BY YOU OF ANY CONFIDENTIAL INFORMATION ALL INTELLECTUAL PROPERTY RIGHTS RESERVED BY FIBERFIN INC.

UNLESS OTHERWISE SPECIFIED:

DIMENSIONS ARE IN INCHES
TOLERANCES:
FRACTIONAL $\pm 1/32$
ANGULAR: MACH $\pm 1/2$ BEND ± 1
TWO PLACE DECIMAL $\pm .015$
THREE PLACE DECIMAL $\pm .005$

INTERPRET GEOMETRIC
TOLERANCING PER:

MATERIAL

FINISH

DO NOT SCALE DRAWING

	NAME	DATE
DRAWN	J.S.M.	8/27/15
CHECKED	P.M.	9/1/15
ENG APPR.		
MFG APPR.	P.M.	9/1/15

Q.A.

COMMENTS:

FiberFin, Inc.
9925 Rt 47 Unit A
Yorkville, IL.
60560 USA

TITLE:

ST CRIMP/SWAGE TOOL

SIZE

A

DWG. NO.

FF-HTCSWG-ST

REV

SCALE: N/A WEIGHT:

SHEET 1 OF 1