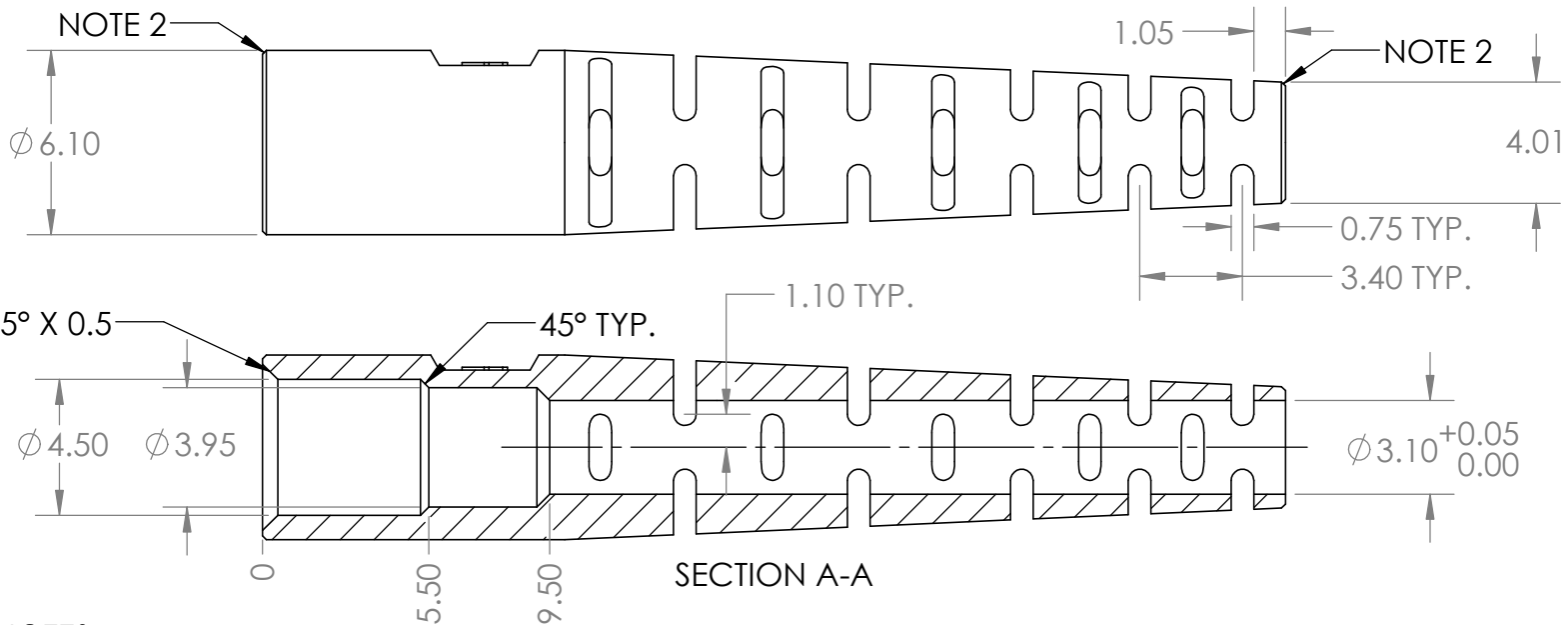
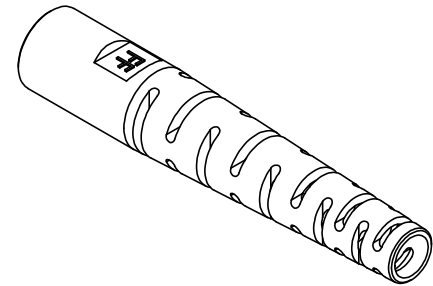
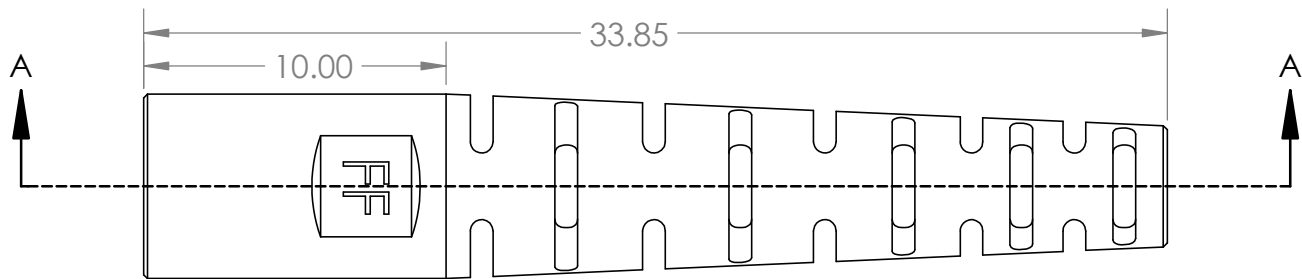


REV.	DESCRIPTION	DATE	APPROVED
------	-------------	------	----------



**NOTES:**

- MATERIAL: SARLINE #4376 BLACK, RED, BLUE, WHITE, OR APPROVED SUBSTITUTE
- BREAK SHARP CORNERS

**CONFIDENTIALITY NOTICE:**

THIS INFORMATION IS OWNED BY FIBERFIN, INC. AND CONTAINS MATERIALS CONCERNING FIBERFIN, INC. INTELLECTUAL PROPERTY RIGHTS, BUSINESS PLANS, CUSTOMERS, AND PRODUCTS THAT ARE CONFIDENTIAL AND OF SUBSTANTIAL VALUE TO FIBERFIN, INC. YOU ARE HEREBY NOTIFIED THAT ANY DISSEMINATION, DISTRIBUTION, OR COPYING OF THIS CONFIDENTIAL INFORMATION WITHOUT PRIOR WRITTEN PERMISSION FROM FIBERFIN, INC. IS STRICTLY PROHIBITED. IN RECEIVING THIS INFORMATION, YOU AGREE THAT YOU SHALL NOT DISCLOSE ANY SUCH CONFIDENTIAL INFORMATION TO ANY THIRD PARTY AND SHALL TAKE EVERY REASONABLE PRECAUTION TO PROTECT SUCH CONFIDENTIAL INFORMATION FROM SUCH DISCLOSURE. IN THE EVENT YOU ARE ASKED TO RETURN THE CONFIDENTIAL INFORMATION TO FIBERFIN, INC., THERE SHALL BE NO USE OR DISCLOSURE BY YOU OF ANY CONFIDENTIAL INFORMATION.

ALL RIGHTS RESERVED BY FIBERFIN, INC.

UNLESS OTHERWISE SPECIFIED:	NAME	DATE
<b>DIMENSIONS ARE IN MILLIMETERS</b>	DRAWN	CRW 2019-10-17
TOLERANCES: ONE PLACE DECIMAL: ±0.2 TWO PLACE DECIMAL: ±0.1 ANGULAR: MACH: ±0.5°, BEND: ±1°	CHECKED	
	ENG APPR.	
	MFG APPR.	
DIMENSIONS BASED UPON ANSI Y 14.5M-1994	Q.A.	
MATERIAL SEE NOTE #1	COMMENTS:	RoHS, REACH compliant
FINISH		
DO NOT SCALE DRAWING		

<b>FiberFin</b> 9925 State Route 47 Unit A Yorkville, IL 60560 U.S.A.		
TITLE Strain Relief, SMA and ST		
SIZE <b>A</b>	PART NO. FF-SNSTR-A	REV -
SCALE: 4:1	WEIGHT:	SHEET 1 OF 1