

Molex SMI POF Field Termination Instruction



- 1) Assembled long SMI
- 2) SMI connector plug
- 3) SMI connector cover
- 4) SMI connector fiber stopper
- 5) SMI short body connector
- 6) Assembled short SMI
- 7) SMI cutting tool

- Work instructions are designed to work with Molex Short and Long SMI Connector Kits.
 - Short Kit PN 106108-6302
 - Long Kit PN 106108-6303
- If necessary, use the tool to cut the plastic optical fiber evenly as shown in Figure 1.
- Split the cable jacket as shown in Figure 2 and separate the zipcord approximately 2".
- If this cable is being terminated with the long connector, slide the cover housing onto the assembly (Figure 3).
- Strip about a half inch of jacket off of the first fiber (Figure 4). Note: To strip the fiber, insert the fiber into the tool and close the tool. While the tool is closed, rotate the tool in a circular motion a few times and then pull outward to remove the jacket.
- Line up the second fiber to the seam of the tool as shown in Figure 5 and then remove that jacket as well.
- After stripping, the fibers should appear as they do in Figure 6.

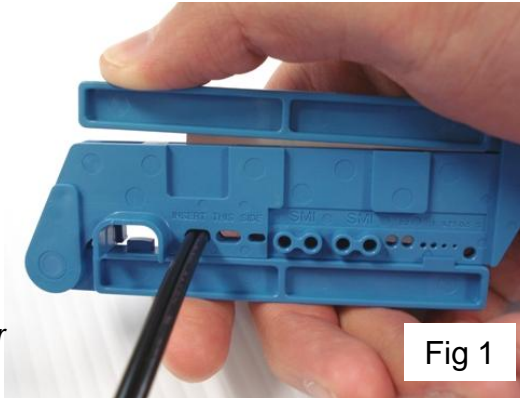


Fig 1

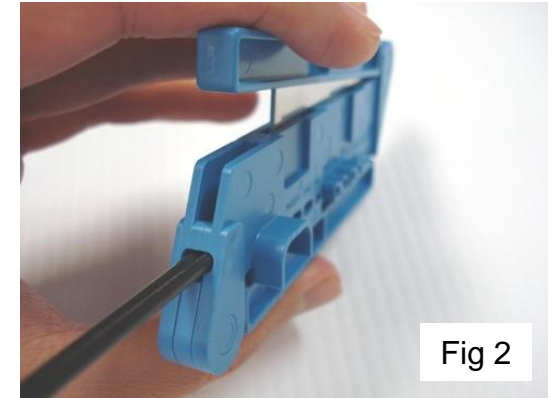


Fig 2

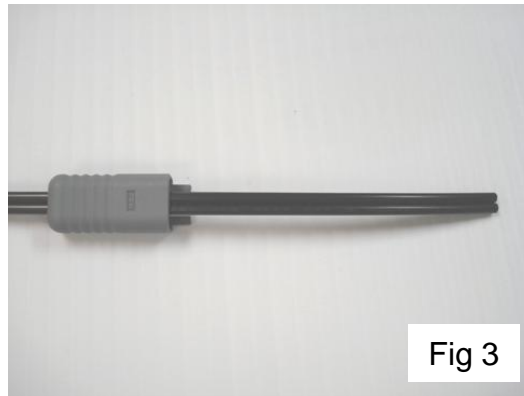


Fig 3

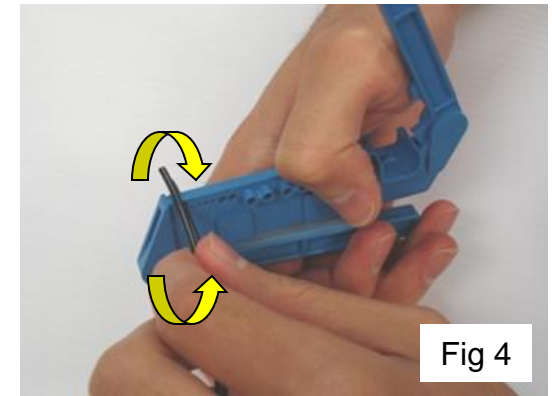


Fig 4

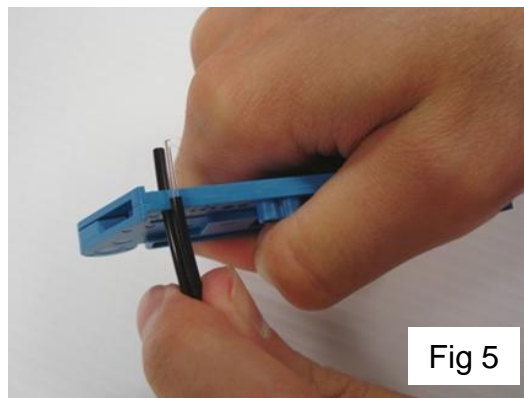


Fig 5

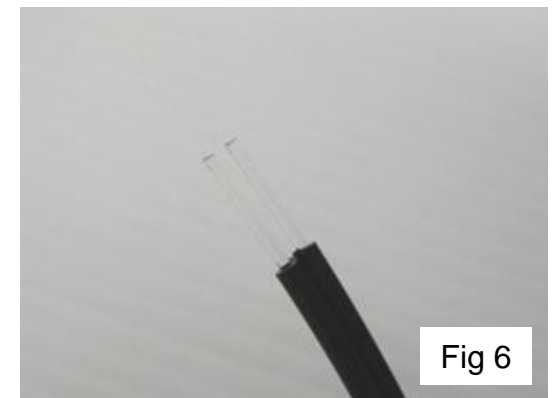


Fig 6



Molex SMI POF Field Termination Instruction

- Slide the fiber into the connector housing (Figure 7). Note: The separation of the zipcord cable may need to be pulled further apart during this step.
- To secure the metal fiber stopper, hold the fiber in the connector housing, place the assembly in the tool and press the metal fiber stopper into the connector housing as shown in Figure 8.
- The metal fiber stopper holds the assembly together and should be fully seated as shown in Figure 9.
- Cleave off the excess fiber using the tool (Figure 10). There are 2 sets of cleaving holes. Each set is good for a maximum of 25 cuts.
- If using the long connector, push the cover housing up until it clicks onto the main connector housing (Figure 11).
- The final assembly should appear as shown in Figure 12.

